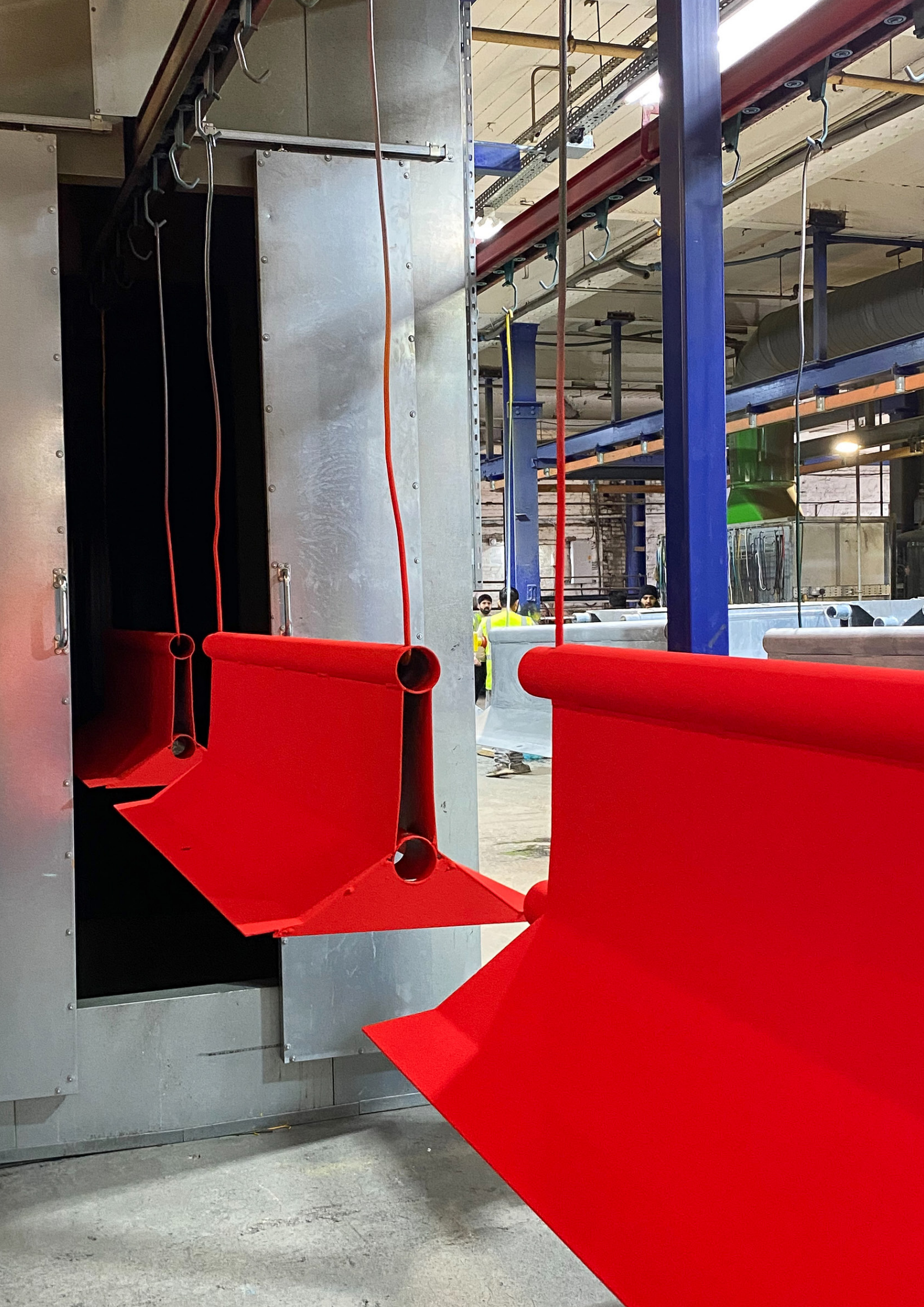


MANTA[®] BARRIER

Durable, All-Weather Road Safety
& Construction Barriers







PRODUCT INFO

With its flexible design, the original Manta Barrier is a durable construction that enables these barriers to be repositioned and reused as many times as your project requires.

Manta Barriers are made from long-lasting, recyclable galvanised steel, and is available powder-coated to provide high visibility and the capability to withstand all weather conditions. Each unit is connected to another, using a removable steel pin, to form a continuous barrier system. These barriers are manufactured in the UK.

NO CONNECTION BARS NEEDED

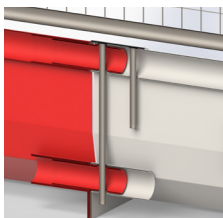
The Barrier maintains its tested safety standards when also supporting either a 1.5m long pedestrian fence or 3m long temporary fence, which eliminates the need for a connection bar.

KEY FEATURES

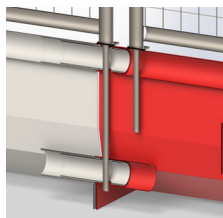
- Cost-effective solution
- Up to 144m per load
- Tested as free-standing with no ground drilling needed
- Class A Wind Tunnel Test Certification
- Crash tested T2 W7 of BS EN 1317:2010
- Quick and easy to assemble, install and reposition
- Lightweight & stackable for easy transportation and storage
- Compatible with top-section safety fencing for added safety and perimeter protection
- Available in 2 high visibility colours as well as unpowder-coated



Connection pin



Using pin plate



Using fence add-on
bar extensions

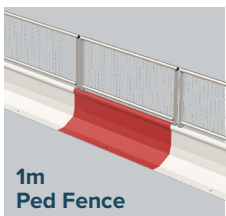


Crash tested to
T2 W7 levels

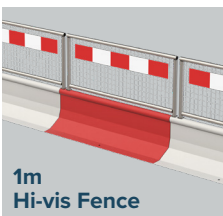


Class A wind
tunnel tested

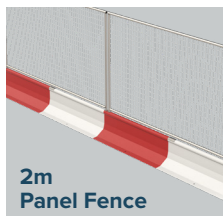
FENCING OPTIONS



1m
Ped Fence



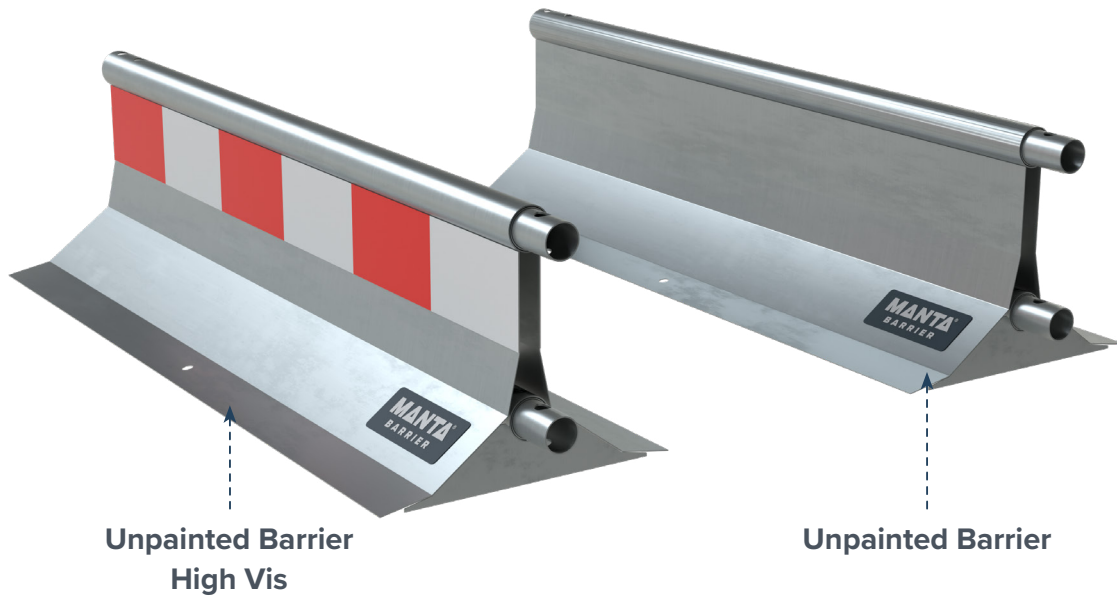
1m
Hi-vis Fence



2m
Panel Fence

SPECIFICATIONS

Product ID	MTS200000	MTS200010
Colour	Red	White
Height (mm)	420	420
Depth (mm)	500	500
Width (mm)	1500	1500
Weight (kg)	48	48



UNPAINTED BARRIERS

Offering the same durable, long-lasting design as the original, without the powder coated finish.

Made from recyclable galvanised steel, it is built to withstand tough conditions and is suitable for repeated repositioning and reuse throughout the life of your project.

This model is available unpowder-coated or with a high-visibility red and white stripe option. Each unit securely connects to the next using a removable steel pin, allowing you to create a continuous and adaptable barrier system tailored to your site requirements.

DURABILITY

Manta Barriers are manufactured from hot-dipped galvanised steel which means they are durable and highly resistant to corrosion, enabling a rugged and long lasting solution.

KEY FEATURES

- Cost-effective solution
- Up to 144m per load
- Tested as free-standing with no ground drilling needed
- Class A Wind Tunnel Test Certification
- Crash tested T2 W7 of BS EN 1317:2010
- Quick and easy to assemble, install and reposition
- Lightweight & stackable for easy transportation and storage
- Compatible with top-section safety fencing for added safety and perimeter protection
- Available unpainted and with a high visibility stripe



Crash tested to
T2 W7 levels

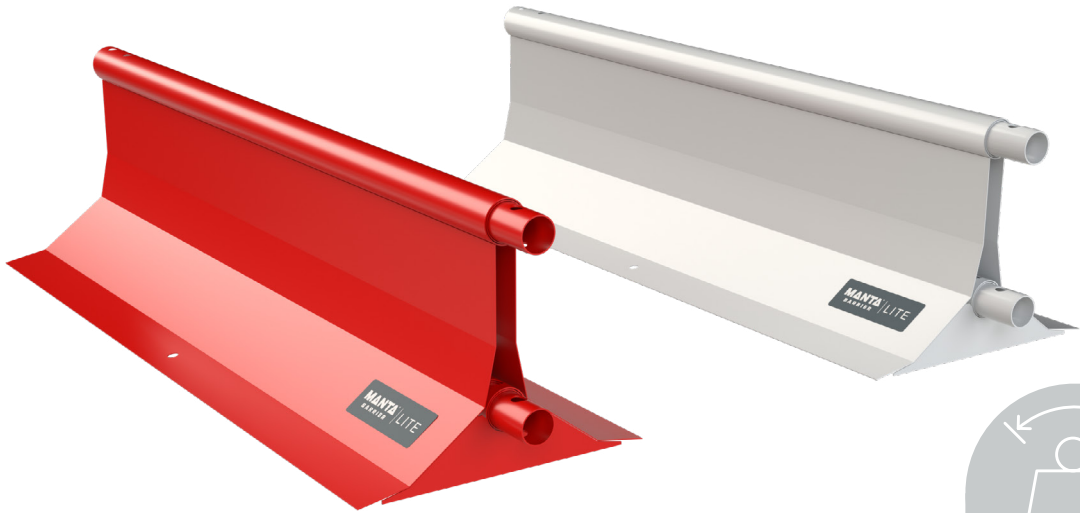


Class A wind
tunnel tested



SPECIFICATIONS

Product ID	MTS190020	MTS190030
Colour	Hi Vis Striped	Unpainted
Height (mm)	420	420
Depth (mm)	500	500
Width (mm)	1500	1500
Weight (kg)	48	48



MANTA LITE

Manta Lite is the lighter evolution of our barrier system, designed for easier handling and faster installation. Its reduced weight makes repositioning less taxing for site teams, improving safety and efficiency during setup.

The lightweight design also makes it a practical, cost-effective alternative to water-filled barriers. It offers rapid deployment where crash-tested protection is not required.

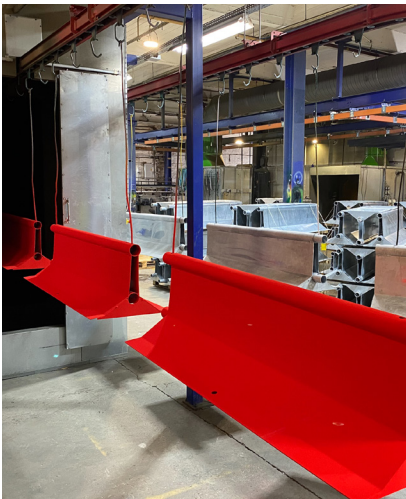
Manufactured in the UK from recyclable, galvanised steel, Manta Lite is available both powder-coated for high visibility and un-powder coated, whilst maintaining long-term durability. Each connects securely with a removable steel pin, creating a continuous system ready for reuse across multiple projects.

KEY FEATURES

- Lighter-weight solution
- Cost-effective solution
- Up to 144m per load
- Quicker and easier to assemble, install and reposition
- Lightweight & stackable for easy transportation and storage
- Compatible with top-section safety fencing for added safety and perimeter protection
- Available in 2 high visibility colours as well as unpowder-coated

POWDER COATING

The red and white alternating design of the powder coated barriers provide a high visibility safety presence on site. The powder coat further enhances its durability and corrosion resistance.



SPECIFICATIONS

Product ID	MTS190016 (Red) MTS190018 (White)	MTS190010 (Unpainted) MTS190000 (Hi Vis Stripe)
Colour	Red / White	Unpainted / With Hi Vis Stripe
Height (mm)	420	420
Depth (mm)	500	500
Width (mm)	1500	1500
Weight (kg)	26.2	26.2

MANTA BARRIER CORNER SECTIONS

With Manta Barriers there is the added ability to rotate units up to 90° degrees to accommodate bends.

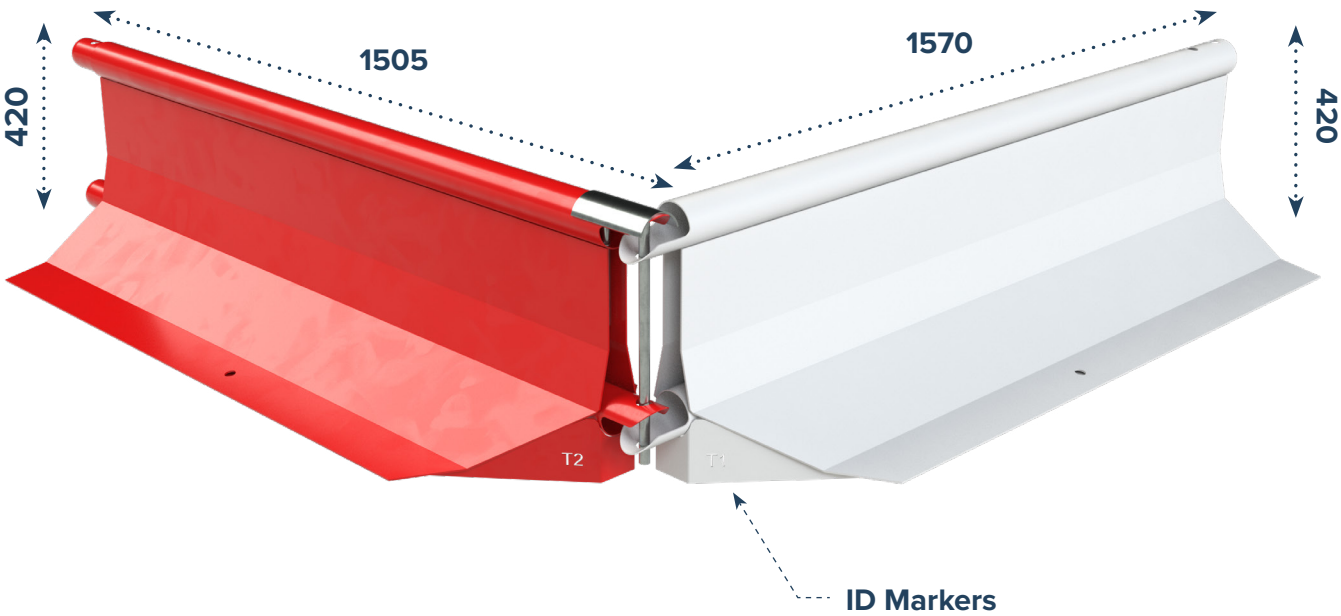
Common applications include defining pedestrian walkways and vehicle access, for example, to create a pit lane on a construction site or anywhere that requires the demarcation of vehicle traffic and footfall for pedestrian, visitor and workforce safety.

APPLICATION

- Easy connection brackets
- 45° degree angled body to allow for 90° degree angles when joined
- Installation of angled sections quick and easy to perform
- The angled sections maintain a very similar visual appearance to the standard units, for consistency throughout the boundary
- Fencing add-ons can still be used with the angled sections
- Perfect for forming pedestrian walkways and construction site access areas

Type 2 Unit

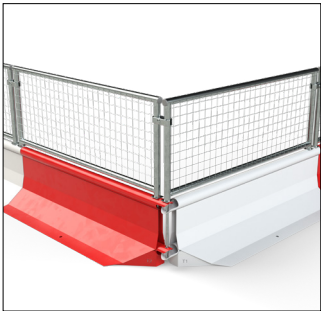
Type 1 Unit



CORNER SECTIONS SPECIFICATIONS

Product ID	MTS200100	MTS200105	MTS200120	MTS200125
Type	Type 1	Type 1	Type 2	Type 2
Colour	Red	White	Red	White
Height (mm)	420	420	420	420
Depth (mm)	500	500	500	500
Width (mm)	1570	1570	1505	1505
Weight (kg)	43	43	43	43

Manta Barriers functioning at 90° degree angle with fence





MANTA BARRIER END SECTIONS

A run of Manta Barriers can be neatly finished off by using our specially designed end section, the finishing section is available for both male and female connections and ensures there are no unwanted edges that could potentially be hazardous.

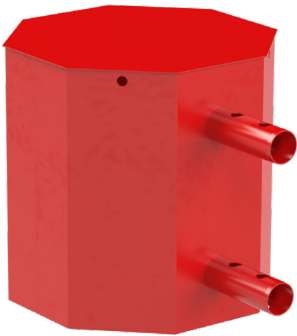
The end section maintains the height of the standard unit and has the advantage of also being compatible with all of the available fencing add-ons.

In addition the end section allows for a nice tidy finish to the end of a Manta Barrier run.

END SECTIONS SPECIFICATIONS

Product ID	MTS 200180	MTS 200185	MTS 200190	MTS 200195
Type	Male	Male	Female	Female
Colour	Red	White	Red	White
Height (mm)	500	500	500	500
Depth (mm)	490	490	490	490
Width (mm)	660	660	580	580
Weight (kg)	17	17	19	19

Male End Section



Female End Section



MANTA BARRIER 1.5M PEDESTRIAN FENCE

The Manta Barrier Pedestrian fence is very lightweight, weighing only 5kg. Despite its light weight, the pedestrian fence extension increases the overall height of the barrier system to a substantial 1m.

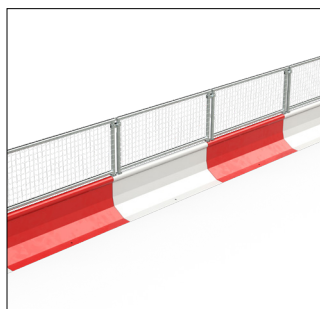
This quick and easy to install extension provides the additional security often needed to protect vehicle drivers, workforce and pedestrians.

By using the pedestrian fence extension you have the reassurance of knowing the extra height achieved will reduce the risk of a passer-by perimeter breach.

KEY FEATURES

- Increases overall height to 1m
- Legs double up as connection pins
- Provides protection to workforce and pedestrians
- Anti-climb mesh fence construction
- Manufactured using galvanised steel
- Reduces the risk of the barrier perimeter being breached
- Quick and easy to install

Row of Manta Barriers with pedestrian fence



1.5M PEDESTRIAN FENCE SPECIFICATION

Product ID	MTS200450
Height (mm)	580
Depth (mm)	38
Width (mm)	1463
Weight (kg)	6



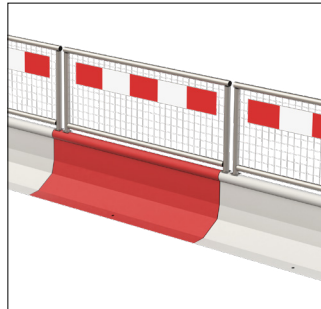
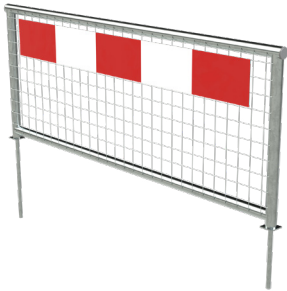
MANTA BARRIER CHAPTER 8 SYSTEM

This enhanced version of the 1.5m pedestrian fence has high visibility and highly reflective red and white markings.

The additional high visibility markings ensure compliance to Chapter 8 requirements, the system is also compliant to road traffic standards BSEN8442 & BSEN12899-1.

Our Manta Barrier Chapter 8 System is strong enough to remain stable in adverse weather conditions due to the substantial 42kg Manta Barrier base unit, this is significant when you consider many Chapter 8 barriers weigh less than 15kg.

Row of Chapter 8 Manta barriers units



KEY FEATURES

- High visibility
- Chapter 8 compliant
- Compliant to requirements BSEN8442 & BSEN12899-1
- Increases overall height to 1m
- Legs double up as connection pins
- Provides protection to workforce and pedestrians
- Anti-climb mesh fence construction
- Manufactured using galvanised steel
- Reduces the risk of the barrier perimeter being breached

HIGH VISIBILITY 1.5M PEDESTRIAN FENCE SPECIFICATION

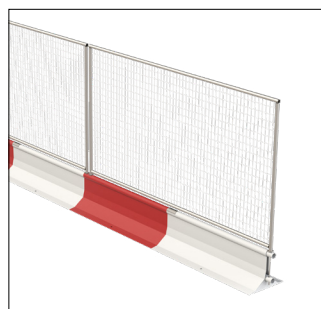
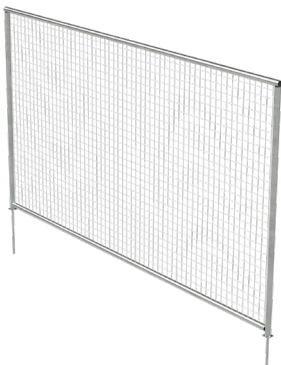
Product ID	MTS200500
Height (mm)	580
Depth (mm)	38
Width (mm)	1463
Weight (kg)	6

MANTA BARRIER 3M FENCE

In addition to its stand alone benefits, the Manta Barrier can accommodate one of the lightest 3m anti-climb fence panels on the market, allowing for greater ease when manually handling.

The add-on panel massively increases the overall height to a lofty 2m. This quick and easy to install extension provides the reassurance of knowing the chances of a perimeter breach are dramatically reduced.

Row of Manta barriers with 3m fence



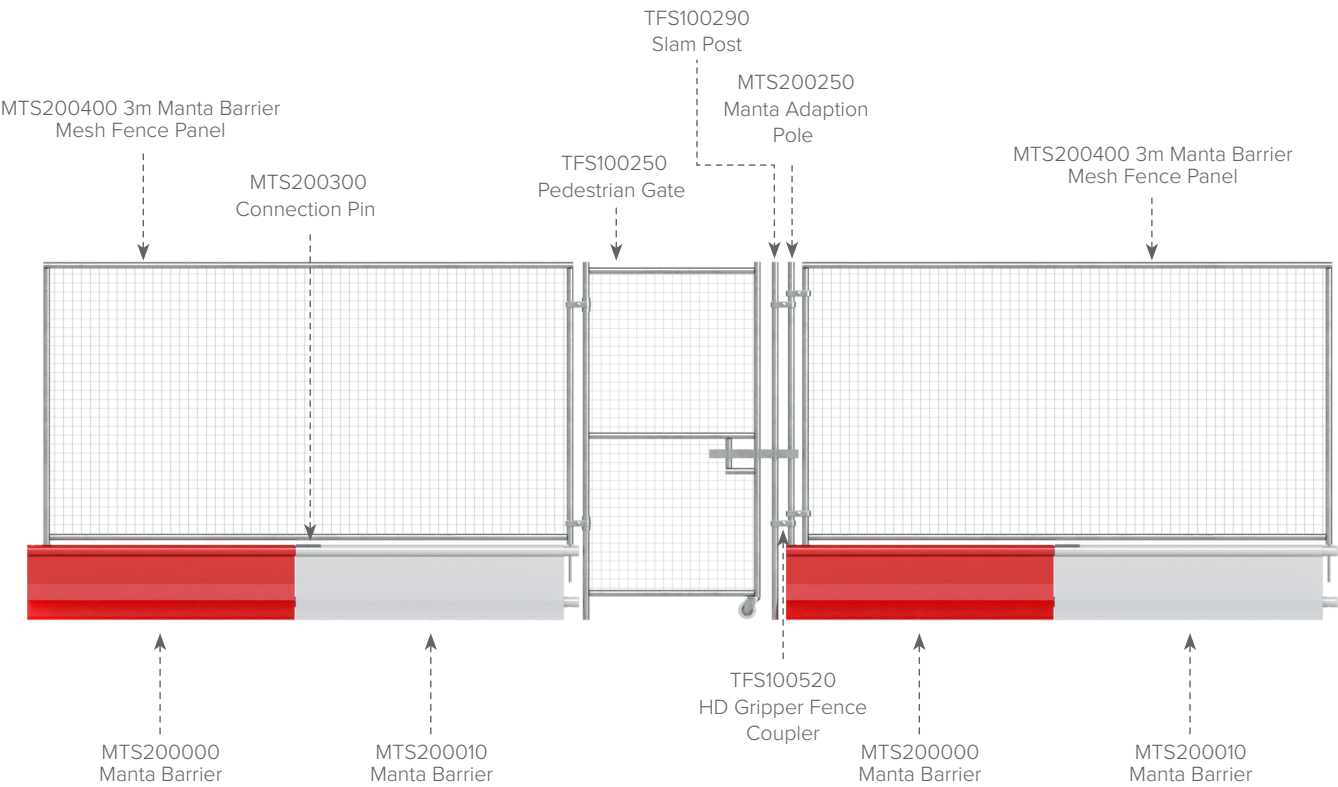
KEY FEATURES

- Increases overall height to 2m
- Legs double up as connection pins
- Provides protection to workforce and pedestrians
- Anti-climb mesh fence construction
- Manufactured using galvanised steel
- Drastically reduces the risk of the barrier perimeter being breached
- Quick and easy to install

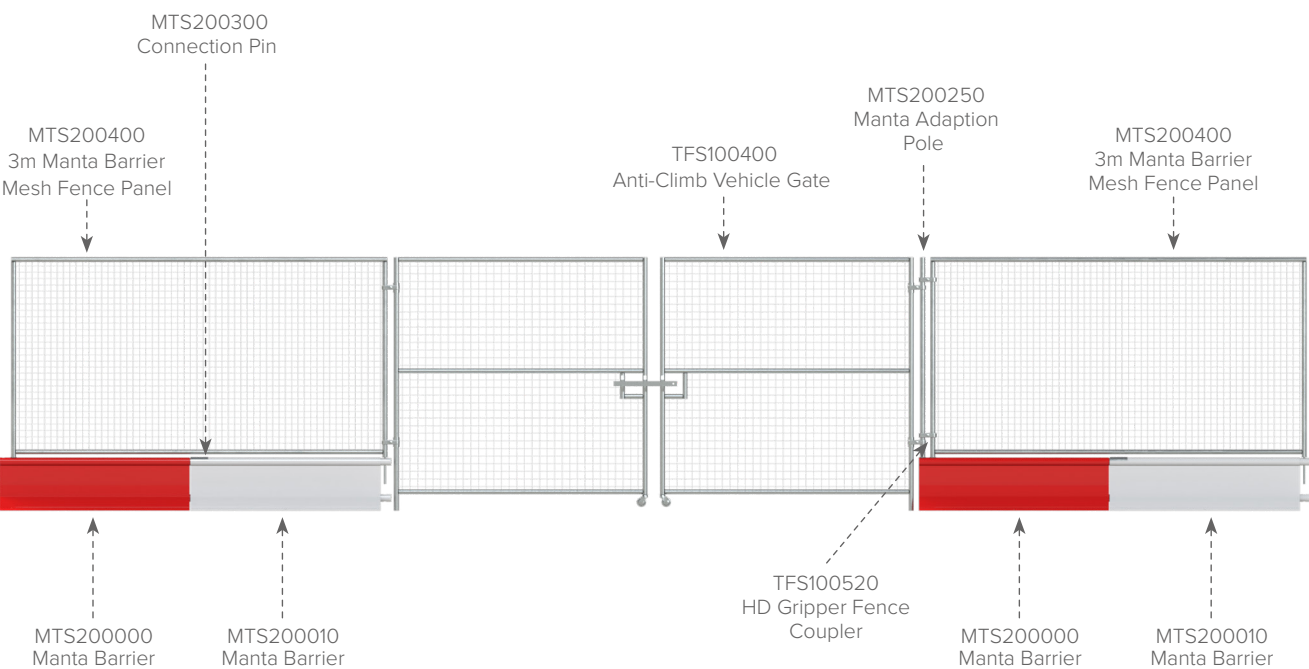
3M FENCE SPECIFICATION

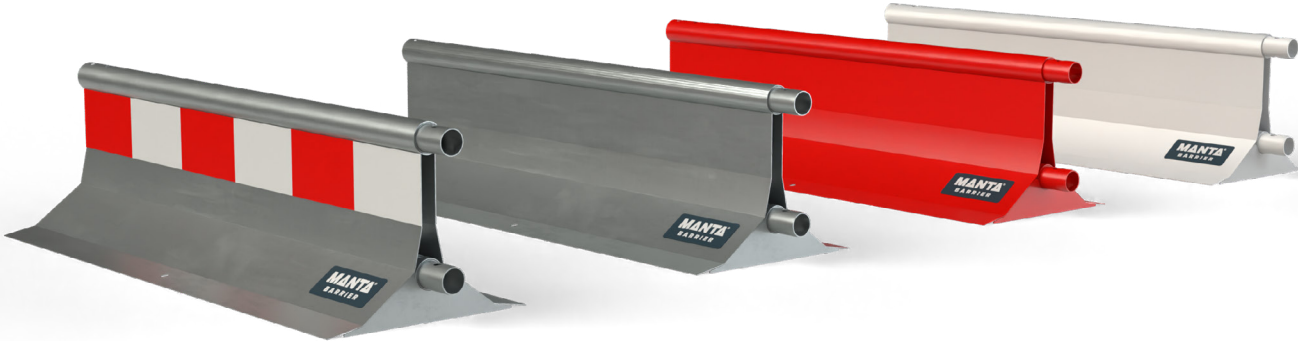
Product ID	MTS200400
Height (mm)	1580
Depth (mm)	38
Width (mm)	2968
Weight (kg)	15

MANTA BARRIER
PEDESTRIAN GATE & FENCING



MANTA BARRIER
VEHICLE GATE & FENCING





MANTA BARRIERS



Product ID



Product



Colour



Height (mm)



Depth (mm)



Width (mm)



Weight (kg)

MTS200000	Manta Base Unit Red	Red	420	500	1500	48
MTS200010	Manta Base Unit White	White	420	500	1500	48
MTS190020	Manta Unpainted / Hi Vis	Unpainted / Hi Vis Striped	420	500	1500	48
MTS190030	Manta Unpainted	Unpainted	420	500	1500	48
MTS190016	Manta Lite Base Unit Red	Red	420	500	1500	26.2
MTS190018	Manta Lite Base Unit White	White	420	500	1500	26.2
MTS190000	Manta Lite Unpainted / Hi Vis	Unpainted / Hi Vis Striped	420	500	1500	26.2
MTS190010	Manta Lite Unpainted	Unpainted	420	500	1500	26.2

MANTA BARRIER - BASE UNIT



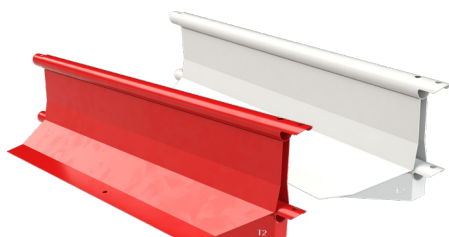
Product ID	MTS200000 (Red), MTS200010 (White), MTS190016 (Lite Red), MTS190018 (Lite White)
Height (mm)	420
Depth (mm)	500
Width (mm)	1500
Weight std (kg)	48
Weight Lite (kg)	26.2

MANTA CORNER - TYPE 1



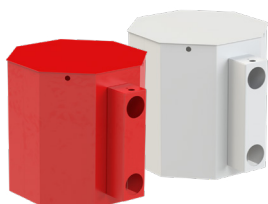
Product ID	MTS200100 (Red), MTS200105 (White)
Height (mm)	420
Depth (mm)	500
Width (mm)	1570
Weight (kg)	43

MANTA CORNER - TYPE 2



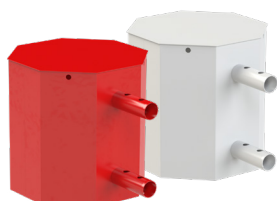
Product ID	MTS200120 (Red), MTS200125 (White)
Height (mm)	420
Depth (mm)	500
Width (mm)	1505
Weight (kg)	43

MANTA END - FEMALE



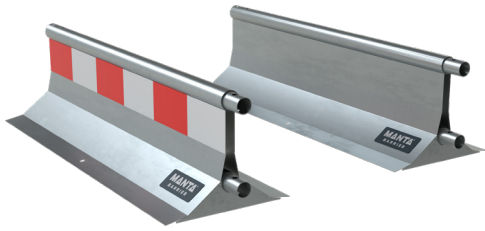
Product ID	MTS200190 (Red), MTS200195 (White)
Height (mm)	500
Depth (mm)	490
Width (mm)	580
Weight (kg)	19

MANTA END - MALE



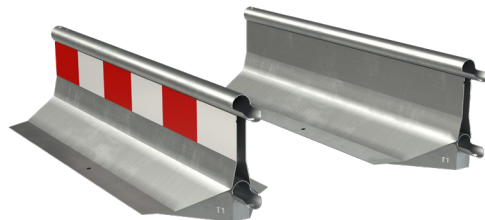
Product ID	MTS200180 (Red), MTS200185 (White)
Height (mm)	500
Depth (mm)	490
Width (mm)	660
Weight (kg)	17

MANTA BARRIER - BASE UNIT



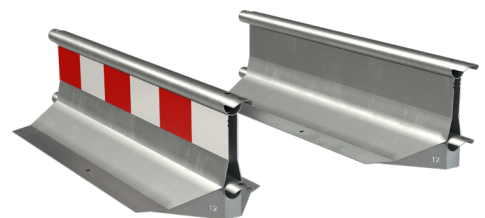
Product ID	MTS190030 (Unpainted), MTS190020 (Hi Vis), MTS1900010 (Lite Unpainted), MTS1900000 (Lite Hi Vis)
Height (mm)	420
Depth (mm)	500
Width (mm)	1500
Weight std (kg)	48
Weight Lite (kg)	26.2

MANTA CORNER - TYPE 1



Product ID	MTS200098 (Hi Vis), MTS200096 (Unpainted)
Height (mm)	420
Depth (mm)	500
Width (mm)	1570
Weight (kg)	43

MANTA CORNER - TYPE 2



Product ID	MTS200108 (Hi Vis), MTS200106 (Unpainted)
Height (mm)	420
Depth (mm)	500
Width (mm)	1505
Weight (kg)	43

MANTA END - FEMALE



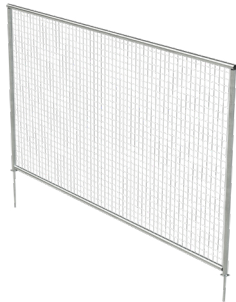
Product ID	MTS200188
Height (mm)	500
Depth (mm)	490
Width (mm)	580
Weight (kg)	19

MANTA END - MALE



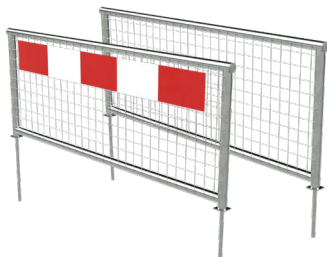
Product ID	MTS200128
Height (mm)	500
Depth (mm)	490
Width (mm)	660
Weight (kg)	17

3M FENCE



Product ID	MTS200400
Height (mm)	1580 (2000 installed)
Depth (mm)	38
Width (mm)	2968
Weight (kg)	15

1.5M PEDESTRIAN FENCES



Product ID	MTS200500 (Hi-Vis), MTS200450
Height (mm)	580 (1000 installed)
Depth (mm)	38
Width (mm)	1463
Weight (kg)	6

CONNECTING PIN



Product ID	MTS200300
Height (mm)	380
Depth (mm)	73
Width (mm)	140
Weight (kg)	1.2

CONNECTING PIN - SINGLE PIN



Product ID	MTS200310
Height (mm)	370
Depth (mm)	50
Width (mm)	50
Weight (kg)	1

ADAPTION POLE - 2M



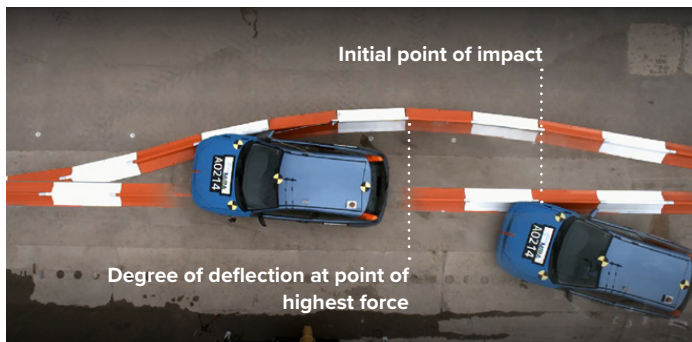
Product ID	MTS200250
Height (mm)	1950
Depth (mm)	50
Width (mm)	50
Weight (kg)	2

MANTA BARRIER CRASH TESTED

The ASI achieved by the Manta Barrier is 0.2 and THIV 13, this results in an A rating for severity which is the lowest and best result achievable.

This report summarises the crash test by Horiba Mira Ltd, where the Manta Barrier System was tested under BS EN 1317:2010, Test Level T2, achieving a W7 rating. The impact conditions of this test were met with total test mass of 1300 (±65) kg at a speed of 82 (-0 + 7%) km/h (50.9mph), at an angle of 15.7° (+1.5, -1) degrees to the line of the barrier traffic face and therefore satisfactory. The vehicle model used to undertake the test was a Ford Focus.

The correct installation of the test item was the responsibility of the client. The length of the barrier tested was 60m (including anchor terminals), the dynamic deflection was 1.6m and the working width was 2.2m. No part of the barrier penetrated the interior of the vehicle and no part of the barrier was ejected.



MANTA BARRIER WIND TESTED

The Manta Barrier has been meticulously tested within an internationally renowned wind tunnel testing facility, during which the barrier system achieved two classification A passes and one classification B pass.

Three arrangements of the Manta barrier system have been tested, these include two adjoined Manta barriers without any add-ons, two adjoined Manta barriers with the lightweight pedestrian fence add-on, and two adjoined Manta barriers with the anti-climb mesh fence add-on. Each arrangement of the system achieved a high level of wind resistance, with the exact resistance figures detailed above the diagrams below.

CRASH TESTED SUMMARY

- Best possible result for ASI & THIV assessment, achieving an A rating
- Passed T2 W7 of BS EN 1317:2010 impact test
- Withstood 1300kg impact at 50.9mph from a 15.7° degree angle
- No reinforcement bar used or required
- Velocity and angle values were within tolerance limits
- The vehicle did not breach the device
- The vehicle did not roll over within the test area
- No part of the vehicle was detached

Highway Speed (mph)	Deflection ² (mm)	Working Width (EN1317 class/mm)
50 (Tested Condition)	1700	W7 (2200)
40	1100	W5 (1600)
30	650	W4 (1150)
20	300	W2 (800)

	Crash Tested	Wind Tested
MTS200000	✓	✓
MTS200010	✓	✓
MTS190020	✓	✓
MTS190030	✓	✓

